

MIO

MUSIC IN OFFICES

Beginner Music Theory #2

1. The major scale, and basic key signatures

Q.1

How would you define a semitone?

The smallest/closest possible movement from one note to another (in the Western musical scale)

Q.2

Write out the notes of the G major scale, with any appropriate accidentals (sharps or flats)



Q.3

And now do the same for the A major scale.



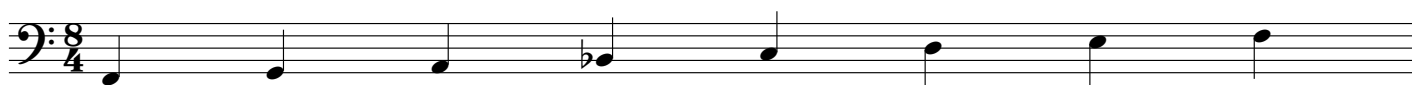
Q.4

The F major scale contains 1 flat note. Which note?

Bb

Q.5

Write out the notes of the F major scale in the Bass Clef, with the correct flat symbol



Q.6

Match the scale to the correct number of sharps/flats:-

| | | |
|----------|---------------------|--------------------------------------|
| C major | 3 sharps (F# C# G#) | C major = No sharps or flats |
| G major | 1 flat (Bb) | G major = 1 sharp (F#) |
| D major | No sharps or flats | D major = 2 sharps (F# C#) |
| A major | 2 sharps (F# C#) | A major = 3 sharps (F# C# G#) |
| F major | 1 sharp (F#) | F major = 1 flat (Bb) |
| Bb major | 3 flats (Bb Eb Ab) | Bb major = 2 flats (Bb Eb) |
| Eb major | 2 flats (Bb Eb) | Eb major = 3 flats (Bb Eb Ab) |

MIO

MUSIC IN OFFICES

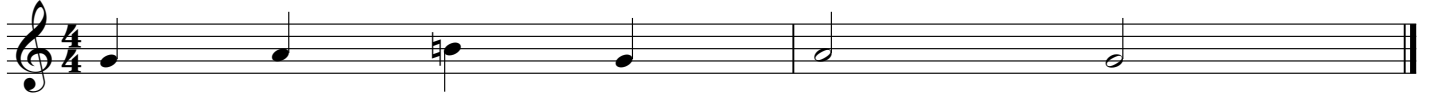
Beginner Music Theory #2

2. Sight reading

Use these 2 bar exercise to practise sight reading (either using Treble or Bass Clef).

Audio examples are on the accompanying mp3.

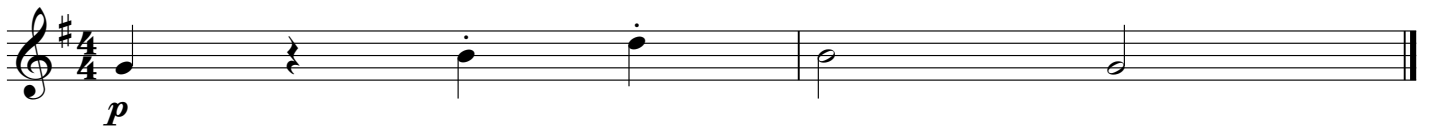
Try to imagine it in your head first, before attempting it.



5 Largo



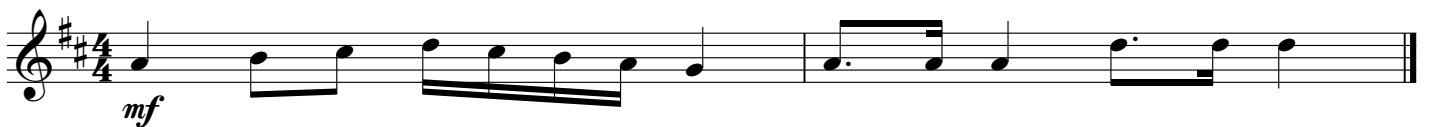
Andante



Andante



Moderato



Allegro

