

MIO

MUSIC IN OFFICES

Beginner Music Theory #2

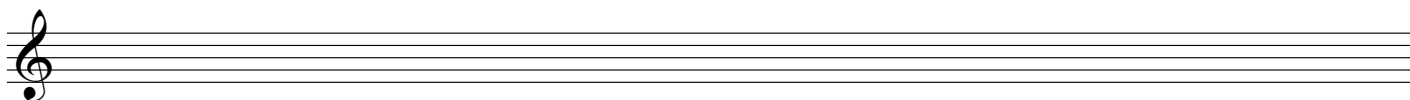
1. The major scale, and basic key signatures

Q.1

How would you define a semitone?

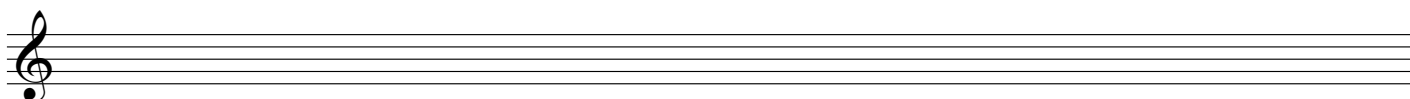
Q.2

Write out the notes of the G major scale, with any appropriate accidentals (sharps or flats)



Q.3

And now do the same for the A major scale.

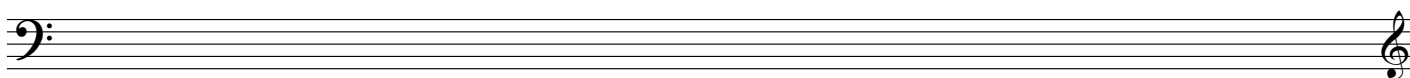


Q.4

The F major scale contains 1 flat note. Which note?

Q.5

Write out the notes of the F major scale in the Bass Clef, with the correct flat symbol



Q.6

Match the scale to the correct number of sharps/flats:-

C major 3 sharps (F# C# G#)

G major 1 flat (Bb)

D major No sharps or flats

A major 2 sharps (F# C#)

F major 1 sharp (F#)

Bb major 3 flats (Bb Eb Ab)

Eb major 2 flats (Bb Eb)

MIO

MUSIC IN OFFICES

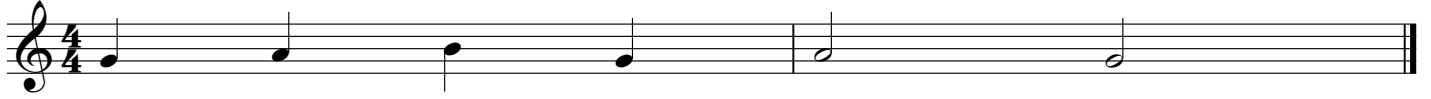
Beginner Music Theory #2

2. Sight reading

Use these 2 bar exercise to practise sight reading (either using Treble or Bass Clef).

Audio examples are on the accompanying mp3.

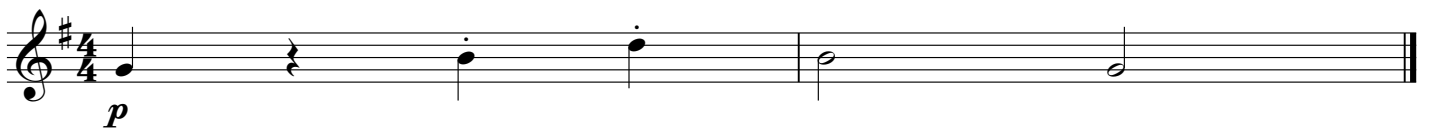
Try to imagine it in your head first, before attempting it.



5 Largo



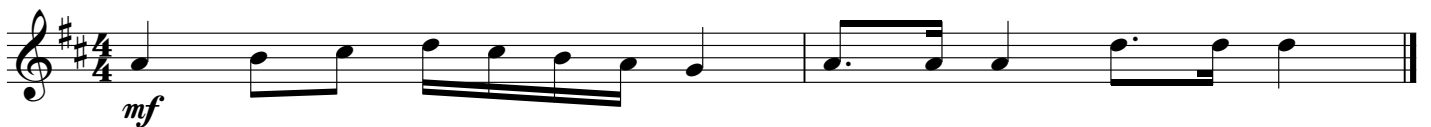
Andante



Andante



Moderato



Allegro

